

History

In the 17th Century, the land now known as the Storey Gardens was used as gardens and orchards. Around 1720 the area became private gardens for the newly built houses in Castle Park.

Lancaster City Council took ownership in the late 1980s. In 1998, with funding from artranspennine98, Mark Dion created and installed the environmental artwork

The Tasting Garden in the western section of the gardens. The original bronze fruit sculptures were stolen in 2008. Local sculptor, Alan Ward, is recreating the sculptures in Portland stone.

Things to do

The perfect picnic spot—soak up the sun or relax under the majestic copper beech.

Stroll through **The Tasting Garden's** fruit trees and sculptures.

Spot wildlife among the flowers and trees.

Pick seasonal herbs and fruits, and browse our plant collection.

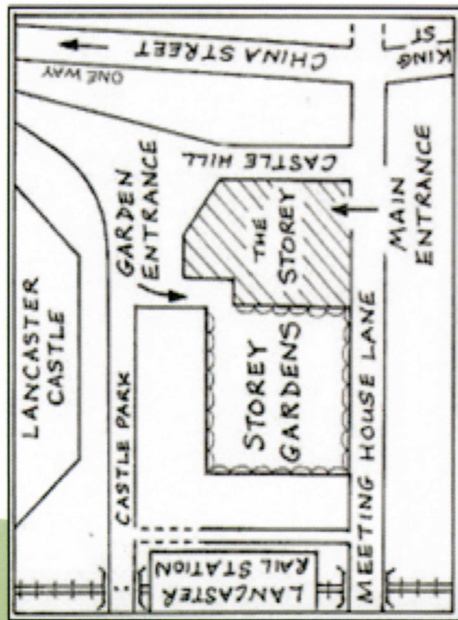
Grab our 'A Walk Around the Block' leaflet for a self-guided local history tour.

The gardens are maintained and cared for by the Friends of the Storey Gardens' volunteers in partnership with Lancaster City Council.

Visit Us

The gardens are free and open Monday to Saturday, 9 am - 5 pm (closed Sundays & bank holidays).

Accessible toilets and The Printroom café are in The Storey.



27 Meeting House Ln, Lancaster LA1 1TH

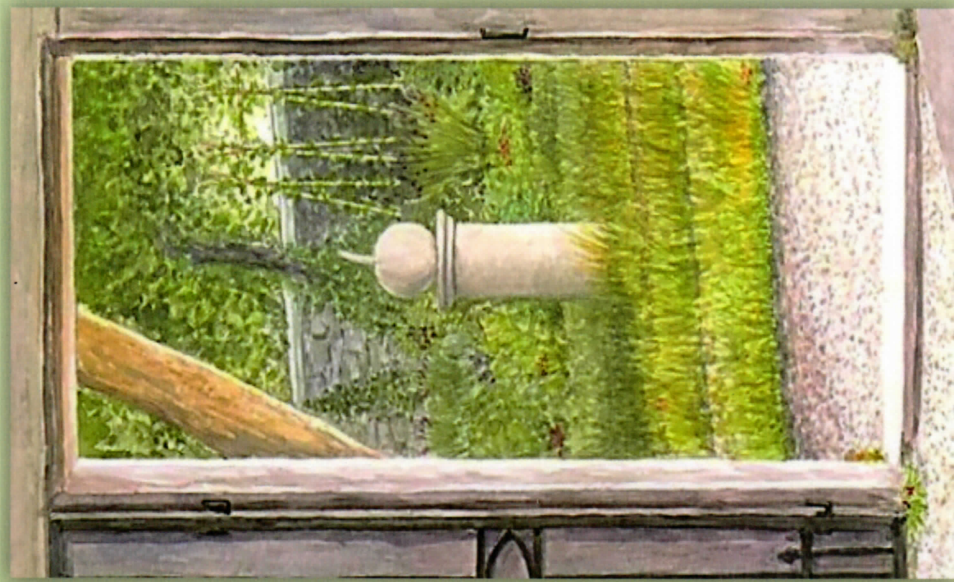
Access the gardens via stairs or lift inside The Storey (Meeting House Lane) or through the gateway opposite Lancaster Castle (steps only).

Volunteer with us

Everyone is welcome to join the Friends of The Storey Gardens. For more information and how to donate visit storeygardens.org or speak to the team at The Storey.



the **Storey** Lancaster's Secret Garden



④ **THE TASTING GARDEN**
 This artwork by Mark Dion opened in 1998. Old varieties of fruit trees are linked by paths in the shape of tree branches. The Portland stone sculptures represent the fruit of the tree that they are close to.

CASTLE PARK

⑤ **THE FOLLY**
 The Arboriculturalist's Workshed was created as a monument to the people who developed new varieties of fruit trees.

⑥ **THE PORTICO GATE**
 This gate was originally the entrance to a nearby house built in the 1770s. It was moved here when the house was demolished.



For more information about the history of the gardens and the work of the Friends' group, please see www.Storeygardens.org.

← To the RAILWAY STATION

③ **GEORGIAN WALL**
 This 18th Century wall originally divided the kitchen garden from the family garden.

② **ORIGINAL GATEWAY**
 This was the south entrance to the gardens when they belonged to a house on Castle Park. Some of the steps were removed when the road was widened for better access to the railway station.

① **THE STOREY**
 The Storey Institute opened in 1891 as a technical college and school of art. It was built at the expense of Sir Thomas Storey to commemorate the Golden Jubilee of Queen Victoria.

→ To the CITY CENTRE